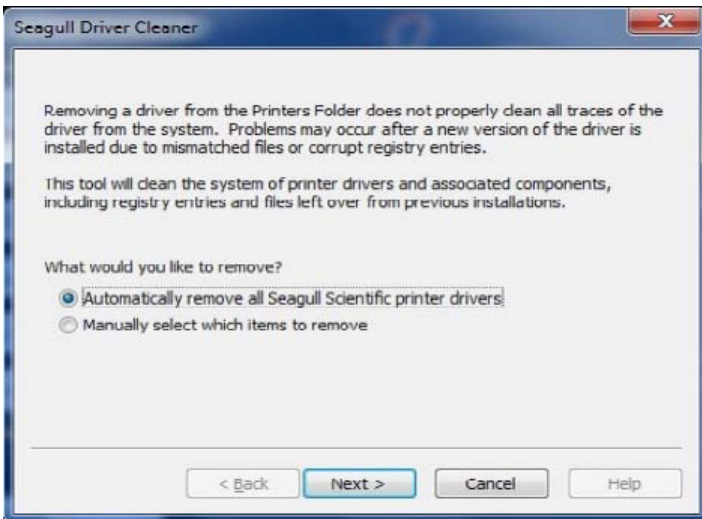


LabelTac Driver Uninstall/Reinstall Guide

This guide will walk you through the process of uninstalling/reinstalling LabelTac printer drivers. Before beginning, please ensure that you have the latest LabelTac drivers installed. You can download the drivers at:

www.labeltac.com/content/public/LabelTac_Driver_Universal.zip

Verify the LabelTac printer is turned on, plugged into an open USB port on your computer and has a solid green status light.

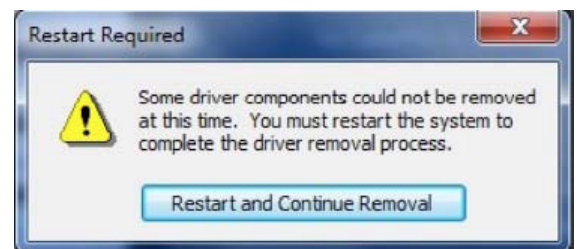


Uninstalling current LabelTac drivers:

1. Unzip LabelTac_Driver_Universal.zip from the link above
2. Open DriverCleaner.exe from DRIVER directory you just extracted
3. Select **Automatically remove All Seagull Scientific printer drivers** and click **Next**

4. The next prompt will summarize all files to be deleted. Select **Finish** to begin uninstall process
5. When uninstall process is complete, you will receive a restart required prompt like this:

IMPORTANT



Once the computer has restarted, you will receive 1 of 2 messages:

Driver Removal Incomplete:

If you receive this message please repeat steps 1-5 until **Drivers Removed Successfully** prompt appears.



Drivers Removed Successfully:

If you receive this prompt, then drivers were successfully uninstalled. Select **Restart Now** and proceed with following steps.



LabelTac Driver Installation:

1. Open **DriverWizard.exe** from the **Driver** folder
2. Select **Install LabelTac Drivers** and click **Next**
3. When prompted, select **Install Printer Drivers** option and click **Next**

You will then be presented with 1 of 2 prompts:

Specify Printer Model:

This prompt indicates that the LabelTac printer is not being detected by Windows. DO NOT select next. Select **Back**, then either power-cycle the LabelTac printer or plug the USB cable into a different port and try again.

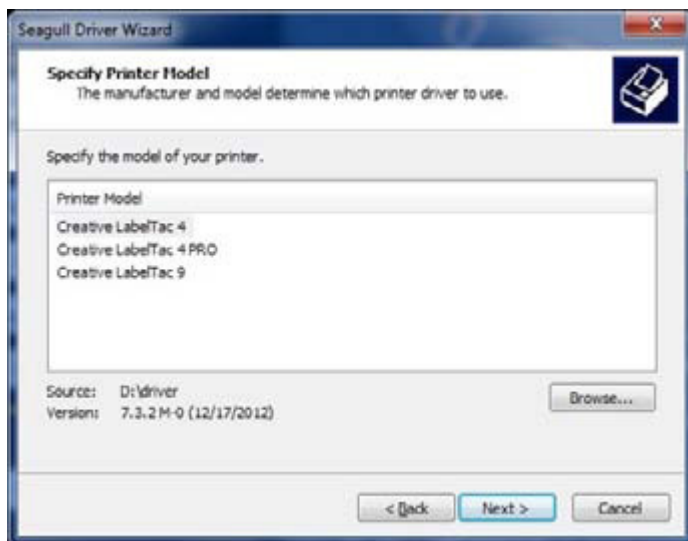
Note that you can select a printer model.

Plug and Play Printer Detection:



This prompt indicates the LabelTac printer has successfully been detected by Windows and is ready for drivers to be installed. Select **Next** and continue with installation steps below.

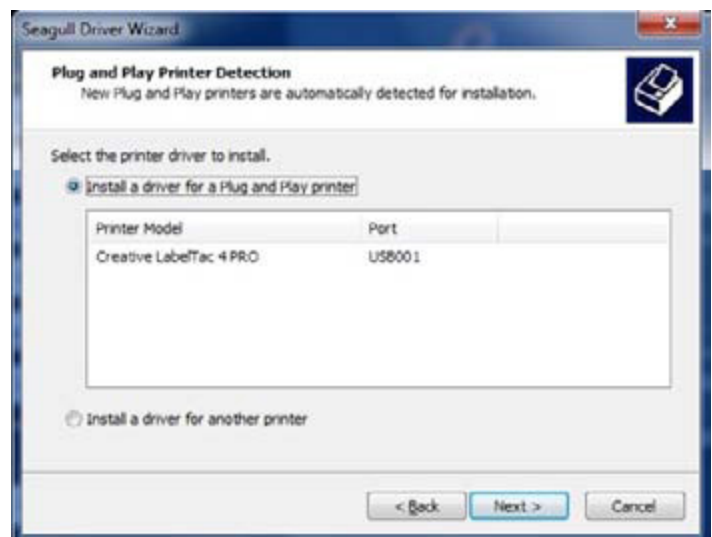
Note that printer is automatically selected.



4. In the next window, select the model of your printer and whether to set it as the default printer (It is advised not to select set as default if this computer uses other printers) Select **Next**

5. Verify information looks correct. Select **Finish** to proceed with the installation
6. Once the installation is finished you will receive a prompt notifying you that driver installation was successful. Verify setup is complete by printing a test label

The LabelTac printer drivers have now successfully been installed.



If you have questions about these instructions, please feel free to contact your account manager. You can also contact us by e-mail at Info@CreativeSafetySupply.com or by phone at (866) 777-1360.