



LabelTac® 4 PRO Reference Guide

A solid orange horizontal bar at the bottom of the page.



powered by Creative Safety Supply

phone **1-877-356-6584**

web **labeltac.com**

email **info@labeltac.com**

Contents

Unboxing

What's in the box	3
Your printer	4

Setup & Install

Before you continue...	6
Connecting LabelTac®	7
Installing LabelTac® drivers	10
Installing templates & symbols	11

Using LabelTac®

Loading print ribbon	12
Loading tape supply	14
How to make labels	16
LED & button functions	19
Ribbon tension	20
Troubleshooting	21
When using die-cut labels...	23
Cleaning your printer	24

Warranty & Support 25

LabelTac® Printers are professional thermal transfer printing systems, designed for creating custom labels and signs, in-house, for a variety of applications including:

Pipe Marking, Safety, Arc Flash, OSHA, Racks/Warehouses, Tool Identification, Lean & 5S, Kaizen, Kanban, Hazmat, ANSI/ASME & more.

We're here to help!

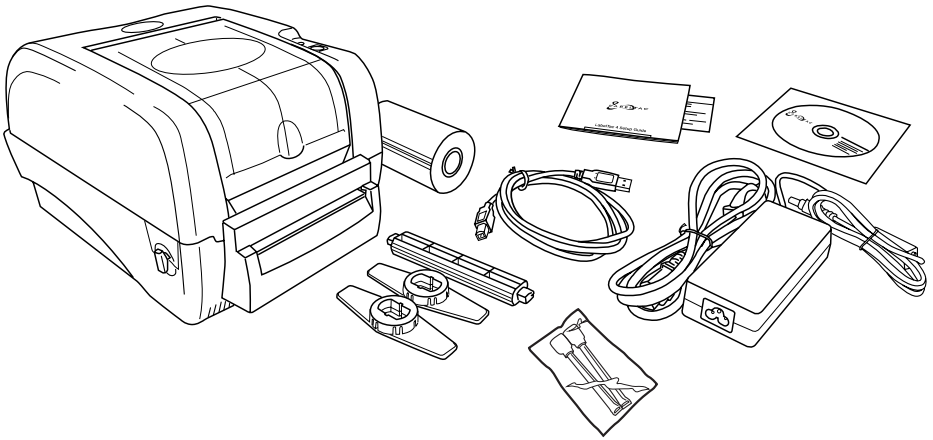
Please give us a call or email if you need any help with installing or operating your LabelTac® Printer:

phone **1-877-356-6584**

web **labeltac.com**

email **info@labeltac.com**

What's in the box

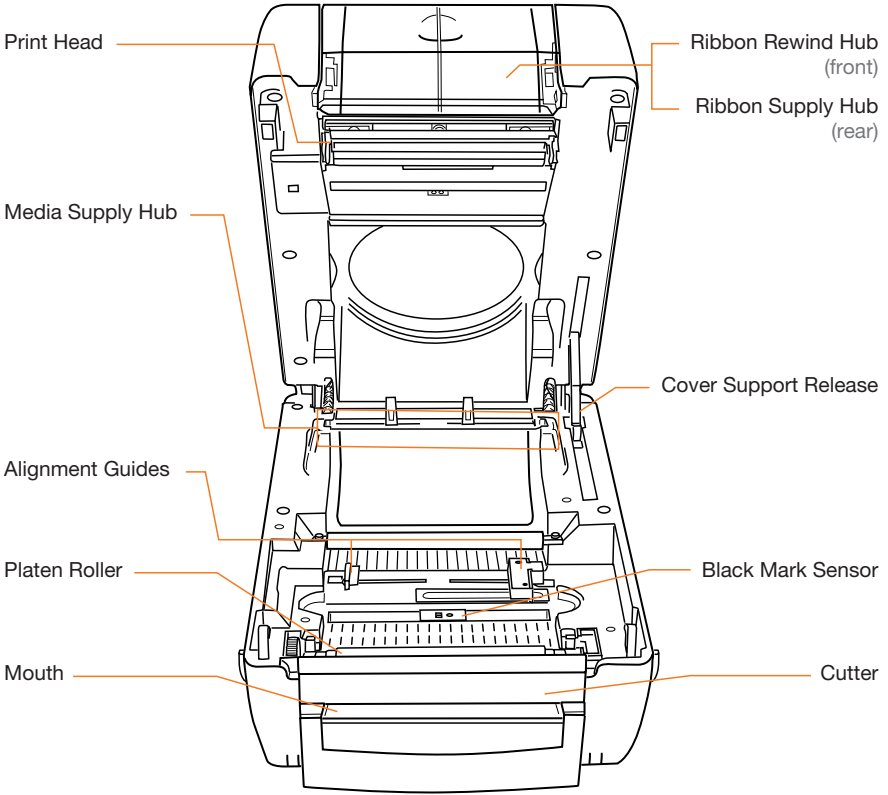


Included

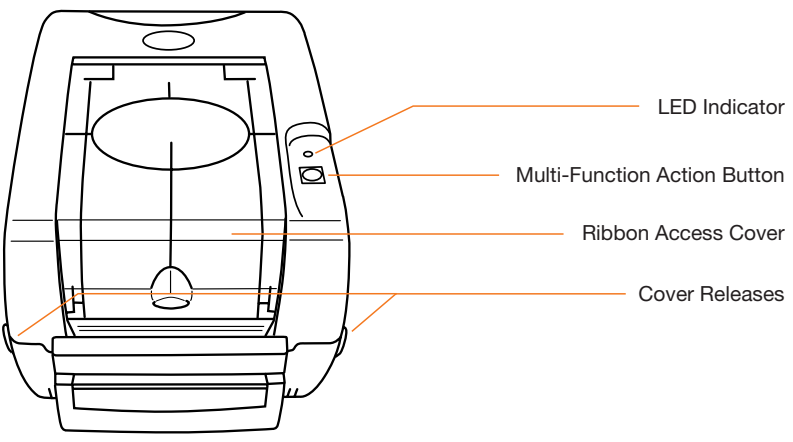
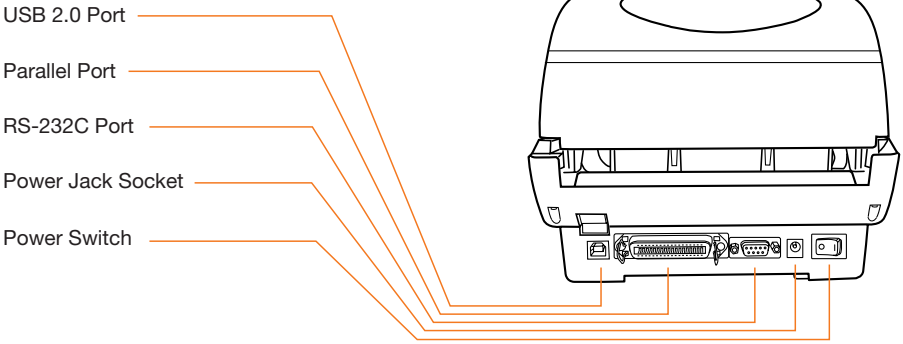
- LabelTac® 4 PRO Printer
- USB Cable
- Power Cable
- Media Holder Assembly
- Install CD
- Reference Guide & Lit
- 1 Black Print Ribbon*
- 2 Cleaning Swabs

* Print ribbon ships pre-installed for convenience

Your Printer



Your Printer (cont'd)



Before you continue...



IMPORTANT

BEFORE INSTALLING DRIVERS...

Please connect your LabelTac® Printer to both your computer and to power, and make sure the printer is turned on.

See pages 7-9 for connection instructions.



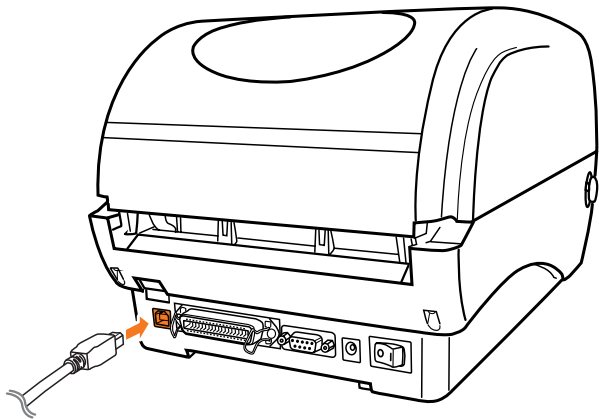
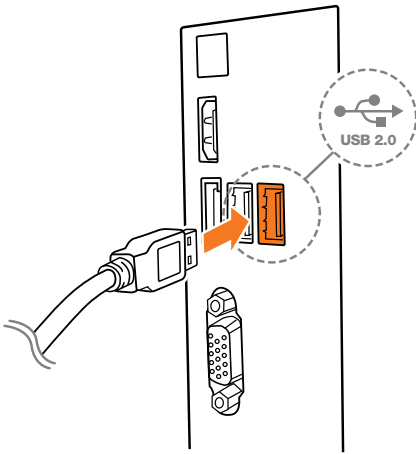
Let us install LabelTac® for you, for free!

We offer a quick 5-minute remote installation- Go ahead, let us do the work while you grab a cup of coffee! Call us at 1-877-356-6584. Mon-Fri, 6am-3:30pm (PST)

Connecting LabelTac®

Step 1: **Connect to PC**

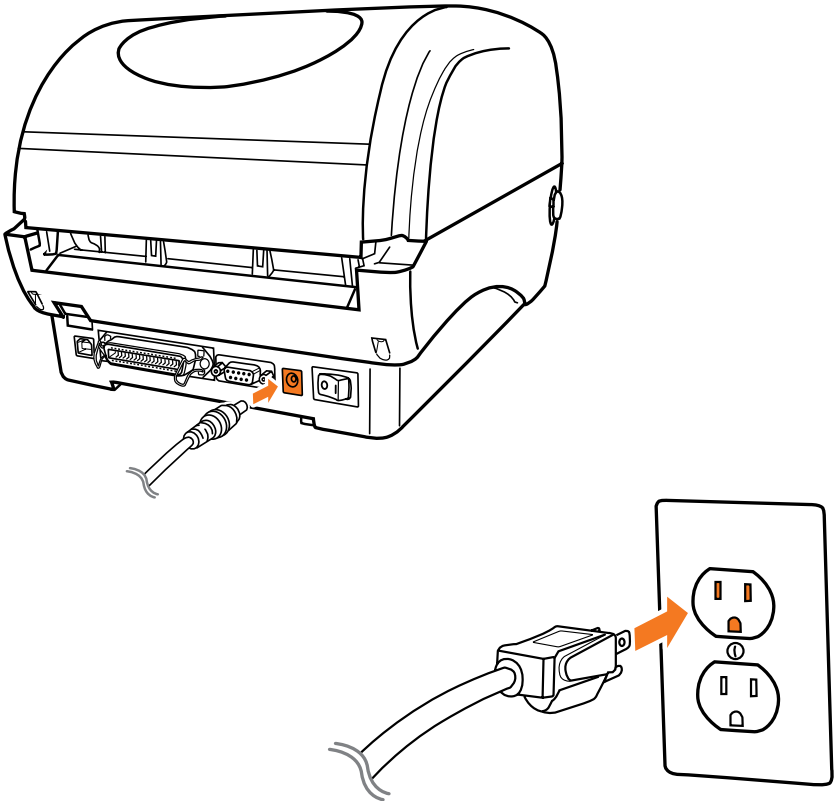
- 1 Connect one end of the USB cable to an available USB 2.0 port on the back of your computer.
- 2 Connect the other end of the cable to the USB port on your LabelTac® 4 PRO printer.



Connecting LabelTac®

Step 2: Connect to Power

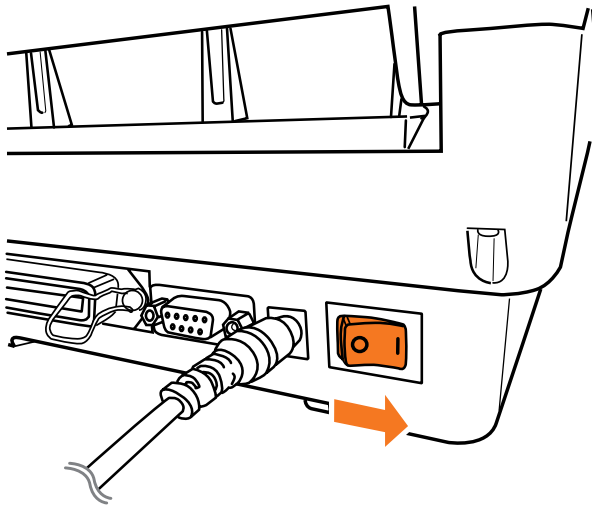
- 1 Connect one end of the power cord to the power port on the back of the LabelTac®.
- 2 Connect the other end of the cable to a power outlet.



Connecting LabelTac® (cont'd)

Step 3: Turn on your printer

- 1 Flip power switch from 'off' position (O) to 'on' position (I). The LED indicator on the top side of the printer will turn green, signaling that the LabelTac® is powered on and ready.



Installing LabelTac® drivers

Note: You must have Admin Rights for your account in Windows to be able to install LabelTac drivers. (Unsure? Give us a call at 1-877-356-6584)

- 1 Insert LabelTac® Install CD. The install menu should auto-load. If it doesn't, open the CD and run **setup.exe** manually.
- 2 Select 'Install LabelTac Drivers'. (If a pop-up appears about making changes to your computer, select 'Yes' and continue)
- 3 Click 'Install printer drivers', and then click 'Next'.
- 4 Select 'Install a driver for a Plug and Play printer' (this should be already selected by default) and click 'Next'.
- 5 In the Printer name field, change the name to LabelTac® 4 PRO. Leave everything else as-is, and click 'Next'.
- 6 Click 'Finish' to start the installation. (If a pop-up appears about driver software publishers, select 'Install this driver software anyways' and continue) Click 'Close' when complete.

Need a hand with installation?

Our representatives are available Mon-Fri, 6am-3:30pm (PST) to assist in a variety of ways with installing your printer. Call us toll free at 1-877-356-6584.

Installing templates and symbols

- 1 From the LabelTac® Install CD menu, select 'Install Templates & Symbols'.
- 2 Choose the folder you would like to install the templates and symbols, and then click 'Install'. (We recommend installing to your desktop for easy access when creating signs and labels)
Click 'Close' when complete.



LabelTac® Printers include hundreds of templates and symbols to help you make professional signs and labels quickly and easily.

Once installed, you will see two folders named 'Templates' and 'Symbols'.

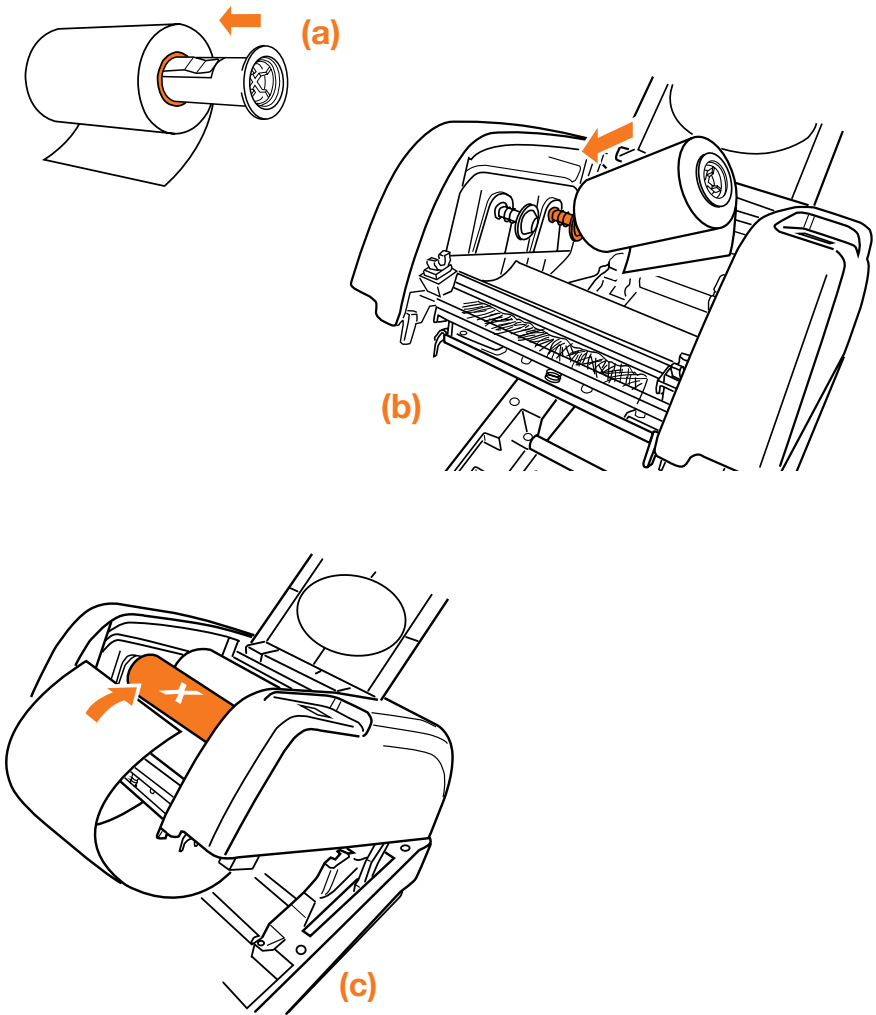
The Templates folder contains customizable industrial templates in MS Word and OpenOffice formats, and is divided into subfolders based on application as well as by size/width.

The Symbols folder contains useful symbols often found on industrial labels in a resizable PNG format. The folder is also divided into subfolders by application, and all also appear together in an '(ALL SYMBOLS)' folder.

Loading print ribbon

- 1** Open cover by pulling both green cover release tabs straight towards you. (The cover support will engage to hold the cover open) Open ribbon access cover by pressing down on the indent.
- 2** Remove outer plastic bag from the ribbon, and unstick the white ribbon 'leader' or 'tail' from the roll. (For new rolls)
- 3** With the ribbon leader hanging from behind/under the roll, insert the ribbon onto a ribbon spool so the flange is on the right hand side **(a)**, then insert spool left-side first onto the ribbon supply hub (rear hub) and snap into place. **(b)**
- 4** Insert empty cardboard core onto the other ribbon spool, and insert spool onto the ribbon rewind hub (front hub).
- 5** Pull ribbon leader down, and then up and over the print head, and stick the ribbon to the core with tape or the leader adhesive. **(c)**
- 6** Turn the rewind hub/core until the leader is wound around the core, and the ribbon material fully covers the print head.
- 7** Close the ribbon access cover, disengage the cover support by lifting it up and towards you, and gently close the top cover.

Loading print ribbon (cont'd)



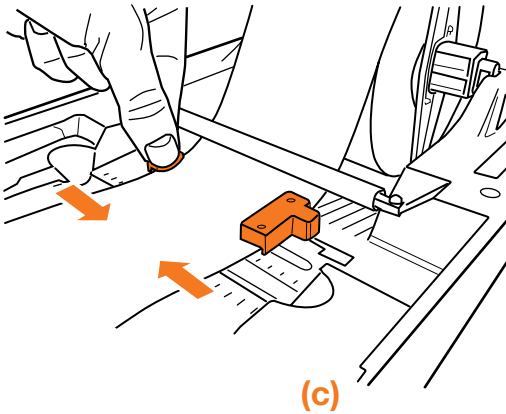
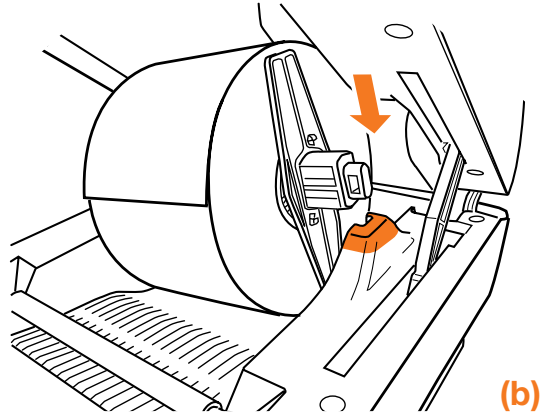
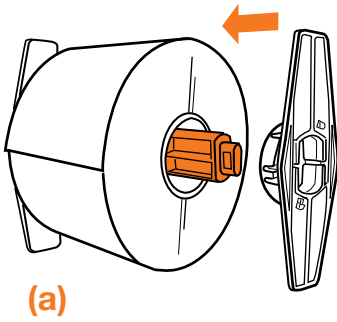
If installed correctly, the dull side of the ribbon should be exposed and facing you.

A full print ribbon loading video is available at www.labeltac.com/support.

Loading tape supply

- 1** Open cover by pulling both green cover release tabs straight towards you. (The cover support will engage to hold the cover open)
- 2** Insert green media holder bar into the core of the tape supply, then insert the media holder caps, 'ring'-side first, onto each end around the material evenly, centering the roll on the bar. (The rings should fit inside the core of the tape supply.) **(a)**
- 3** Insert tape supply/media holder assembly into the media supply hub. The ends of the bar should slide into the notches in the supply hub, and the material should spin freely. **(b)**
- 4** Feed the supply under the white bar, in between the green alignment guides and out through the mouth of the printer.
- 5** Using your fingers, adjust the alignment guides so they fit the width of the material. (But not too tight!) **(c)**
- 6** Disengage the cover support by lifting it up and towards you, and gently close the top cover.

Loading tape supply (cont'd)



A full tape supply loading video is available online at www.labeltac.com/support.

How to make labels

How LabelTac® works

LabelTac® Printers are designed to work with PC's running Microsoft Windows XP or later.

The printer interfaces into your system like a normal printer, allowing virtually any program to print to it, including:

- Microsoft Word (preferred)
- LabelDirect
- Apache OpenOffice
- Seagull Bartender
- Adobe Creative Suite
- Google Docs

Getting started

Creating labels and signs with LabelTac® is easy-

- 1 Start with one of our pre-made templates (see page 11 for information on installing templates) and customize to fit your needs & application...

OR

- 2 Start from scratch in any word or image processing program.



We find Microsoft Word to be the easiest program to design labels and signs in (the majority of the templates that we include with your LabelTac® are in Word format), but if you don't have access to Word on your computer, we include LabelDirect software on the install CD.

If you would like to use LabelDirect, we recommend visiting our LabelDirect support page at labeltac.com/support/labeldirect.

How to make labels (cont'd)

Setting up your document (label size)

The size of the label or sign that will print is determined by the page size in your word/image processing program.

For example- if you want to print a 4"x6" sign, simply set your page size in the program's settings to 4" height and to 6" width.

Be sure to load appropriate width material for your job- for the above example, you would want to load 4" wide material.

Designing your label

Once you've set your document to the size you want to print your label, you can start placing whatever you want into the label- text, images/logos, borders- and what you see on your screen is what will print on your label.

The LabelTac® 4 PRO is a monochrome thermal transfer printer, so when you print your label, the areas of your label that are black (or dark) on-screen will print to the ribbon, while the areas that are white (or light) will not print, allowing the color of the tape you use to remain visible.

For example- if you have yellow vinyl material loaded, and a blue print ribbon- the elements on screen that are black will print to the blue ribbon, and the elements that are white will not print- resulting in a blue on yellow final label.

Designing your label in black and white or grayscale will produce the best results.

How to make labels

Adding: Text

The ideal way to add text in labels designed in word processing programs is through the use of “text boxes”. Text boxes are easily resizable and are able to be moved independently of other elements in your label.

Adding: Images & logos

You can add images and logos to your labels by “inserting” them (typically done through your program’s menu bar: Insert > Image > From File) or by copying and pasting them in.

We find that using PNG images produces the highest quality results, though most image file types are supported.

Adding: Borders

Text boxes can also be used to create borders. In the text box options you can usually add a “stroke” or border to the text box and adjust the thickness, style, etc.

Adding: Industrial symbols

You can add industrial symbols (hazard pictograms, warning symbols, NFPA symbols, etc.) to your labels the same way as you would add other images. We include hundreds of free symbols in the LabelTac® ‘Symbols’ folder. (See page 11 for installation instructions for LabelTac® templates & symbols)

Adding: Arrows

Arrows for marking directions or for use with pipe marking labels can also be found in the LabelTac® ‘Symbols’ folder in the ‘Arrows’ sub-folder. You can also insert or paste your own arrows in most image formats into your label.

LED & button functions

The LabelTac® 4 PRO has one button and one 3-color LED indicator.

LED indicator

LED Color	Description
Green (solid)	Power is on and the device is ready to use
Green (blinking)	System is downloading data from the PC to memory, or the printer is paused
Amber	System is clearing data from the printer
Red (solid)	Printer head is open or printer has a cutter error
Red (blinking)	Printing error- e.g. head open, paper jam, ribbon empty, or memory error

LED & button functions (cont'd)

Action button functions

While powered on (not printing): Feed material

While powered on (printing): Pause or resume printing

Action button: Power-on printer utility functions

If you turn off the printer, hold down the action button, and turn on the printer while still holding the button, the LED indicator will quickly light up amber once, then green, and then flash through a series of colors (each blinking 5 times). Depending on the color that is flashing when you release the button, a printer utility function will happen.

Release during	Description
Red blinking	Ribbon sensor & gap/mark sensor calibration
Amber blinking	Gap/black mark sensor calibration + Dump Mode
Green blinking	Printer initialization

Troubleshooting

First steps

- Ensure LabelTac® is connected to both AC power and to your computer with USB, and that cables are pushed all the way in.
- Did you install the printer drivers before connecting the printer? This can sometimes cause a problem with your computer not being able to recognize the printer at first. Try uninstalling and re-installing the drivers, or call us at 1-877-356-6584.



LabelTac® printing preferences

LabelTac® printing preferences is accessed by navigating to...

Start Menu > Devices and Printers > LabelTac 4 PRO > Printing Preferences

(...or through your program's print dialog when printing*.)

From this menu you can control many things, including: print speed, “darkness” (print density), graphics rendering, etc.

* Changing settings this way only changes them for the current session. Once you close the document, your printer preferences will revert to their previous settings. If you navigate to printer preferences through Start Menu > Devices and Printers, the settings will be retained.

Troubleshooting (cont'd)

Common issues

Symptom	Causes/Suggested action
Speckling/spotting, rough edges, inconsistent print	Heat (speed/density) settings are too low. In Printing Preferences > Options, try lowering the print speed and/or raising the density. (We find a speed of 2 and density of 7 yields the best results in most cases)
Half-moon arches in print	Heat (speed/density) settings are too high. In Printing Preferences > Options, try raising the print speed and/or lowering the density.
Diagonal lines through print	Ribbon may have an alignment issue. Try re-installing the print ribbon. <ol style="list-style-type: none">1 Open ribbon access cover, cut ribbon from rewind hub and remove used print ribbon from cardboard rewind core.2 Using a piece of scotch tape, re-attach print ribbon to the bare cardboard rewind core.
Continuous void through print	This can be a sign of an obstructed or dirty print head. Try cleaning print head with supplied alcohol swabs.
LED indicator blinking red	This can indicate: ribbon or supply is missing/incorrectly loaded/depleted, cutter or paper is jammed, incorrect supply mode (continuous vs die-cut), or a communication/memory error.

When using die-cut labels...

- 1 Load the die-cut material in the printer, leaving a small amount of the first label leading out of the mouth of the printer.
- 2 When ready to print your label, first go to 'Printing Preferences' for your LabelTac® (see page 22). In the tabs at the top of the window, click 'Stock'.
- 3 Under 'Type' in the 'Media Settings' section, change from 'Continuous' to 'Labels with Gaps'. Click OK.
- 4 Change the number of copies to print to '1', (if it isn't set to that already) and click Print/OK to begin printing.

** The printer will print this first label off-center, and the print will overlap into part of the second label. This is normal. (The printer self-calibrates itself by reading the gaps between the labels, and once it reaches the end of the second label, it will be fully calibrated and aligned.)
- 5 Go back and print the rest of the labels as normal.

To switch back to using standard continuous vinyl, simply return to the 'Printing Preferences' window and change the Media Type back to 'Continuous'.

Cleaning your printer

Note: You should clean your LabelTac® printer after every 10 rolls of label supply

- 1 Open cover by pulling both green cover release tabs straight towards you.
- 2 Take one of the included cleaning swabs and squeeze the clear handle until it ‘cracks’ and alcohol is released into the scrubbing pad.
- 3 Scrub the printhead firmly from side to side, but not too hard, as vigorous scrubbing can damage the print head. (Removing surface debris will eliminate blank strips in your printing)
- 4 Clean the mouth of the printer, and the cutter assembly.
- 5 Clean the alignment guides and the area around the alignment guides.
- 6 Clean the platen roller by wiping laterally, turning the roller slightly and wiping again. Repeat until 1 full rotation is made.

Additional cleaning swabs are available at labeltac.com



Visit labeltac.com/support or our YouTube channel at youtube.com/labeltac for helpful videos covering installation, supply loading, cleaning, how to create labels and more.



Warranty



We offer an industry-leading, LIFETIME full warranty to our LabelTac® customers. This is a lifetime warranty on parts, manufacturer defects and even the thermal print head. Our warranty is the label printer equivalent of a “bumper-to-bumper” warranty. If anything goes wrong, we’ve got your back!

For full warranty details, please visit labeltac.com/labeltac-warranty/

Contact us



1-877-356-6584

Monday - Friday, 6am - 3:30pm PST (International Support: +1-330-754-0160 (14:00 - 23:30 GMT))



labeltac.com/support

Live chat, how-to videos, frequently asked questions, driver and software downloads + more



info@labeltac.com

Send us an email- we'll respond to you as quick as we can!

